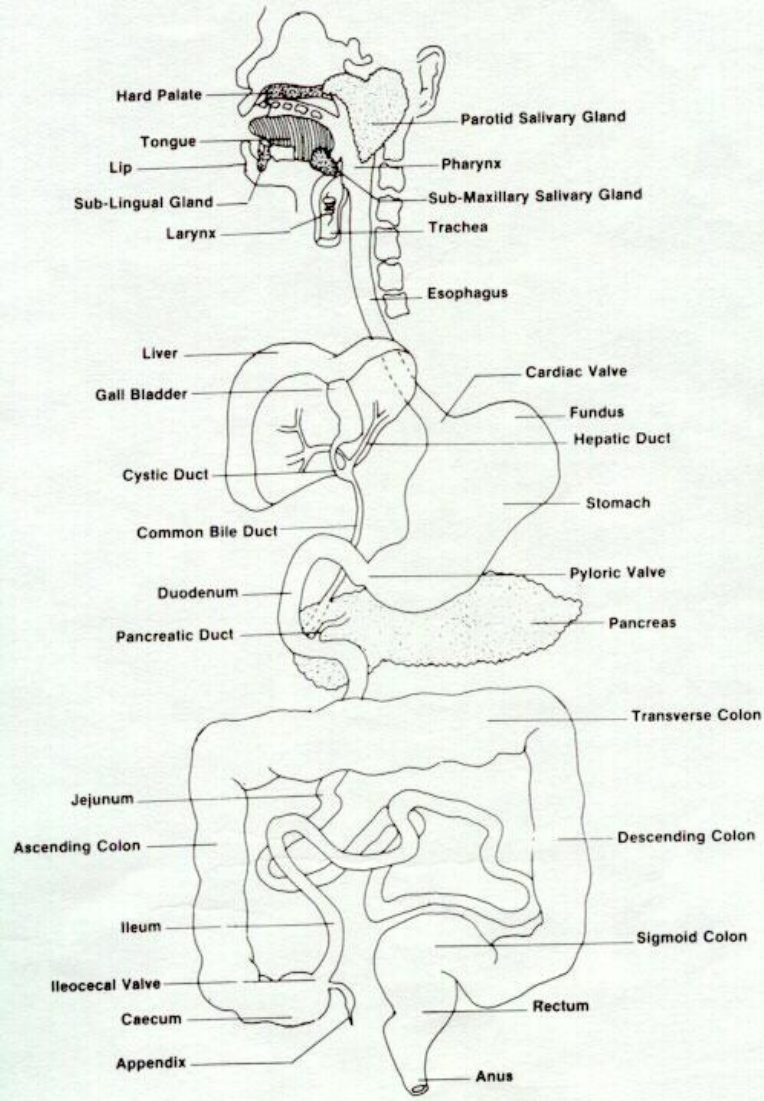
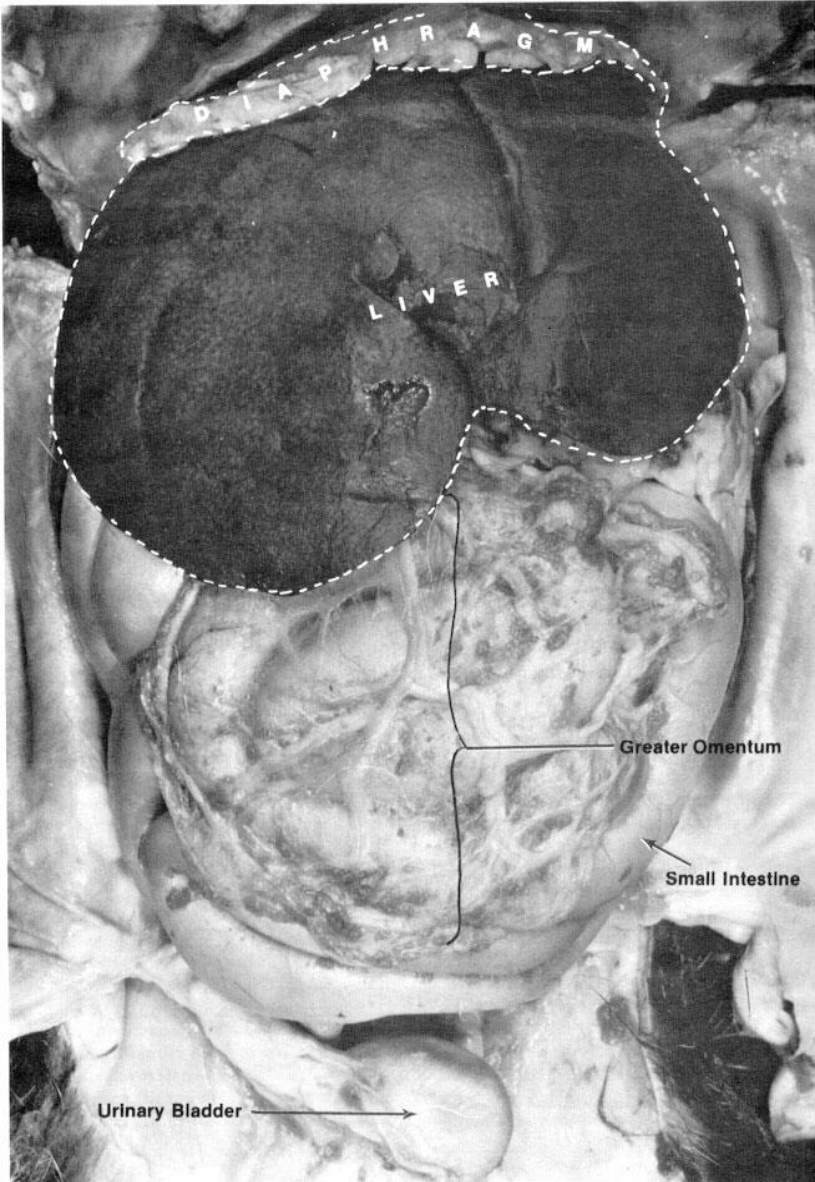
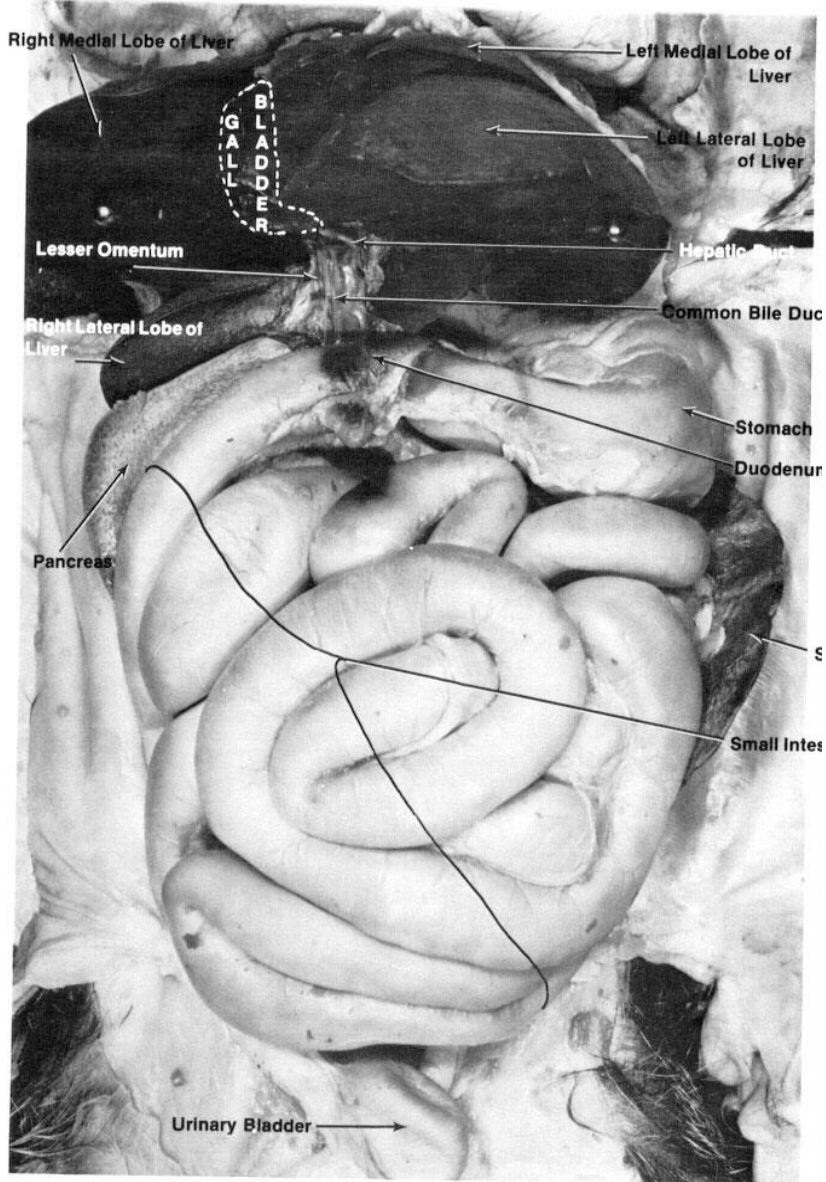
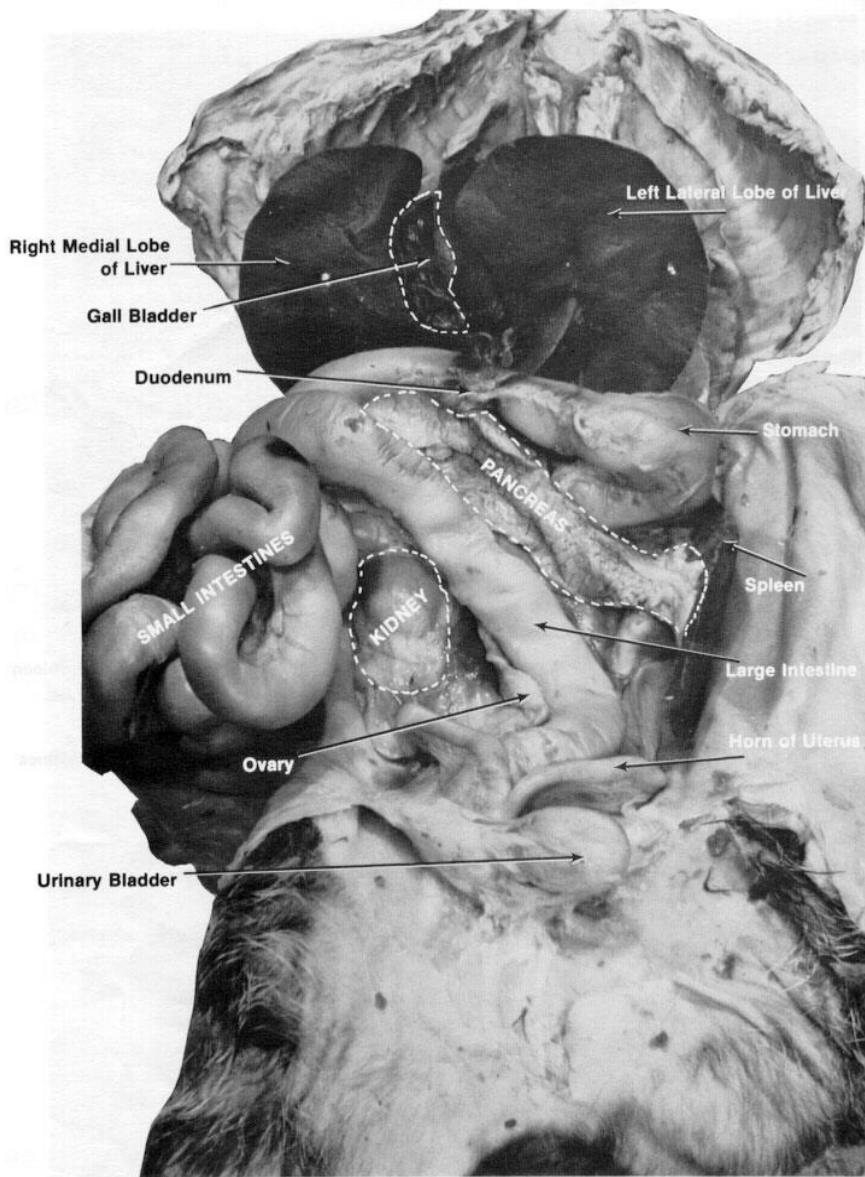


HUMAN DIGESTIVE SYSTEM













Organs or Structures to Know (1)

- Diaphragm
- Esophagus
- Liver
- Gall Bladder
- Stomach (6 parts)
- Small Intestine (3 parts)
- Large Intestine (7 parts)



Organs or Structures to Know (2)

- Pancreas
- Spleen
- Kidney
- Heart
- Lungs
- Trachea
- Urinary Bladder
- Reproductive Structures



Stomach Parts

- Cardiac End: where esophagus joins stomach
- Fundus: Anterior distended end
- Body: main portion of stomach
- Pyloric: where stomach joins small intestine
- Cardiac Sphincter: lets food into stomach
- Pyloric Sphincter: lets food out of stomach



Small Intestine Parts

- Duodenum: 1st part of intestine (4"[10cm] long).
- Jejunum: the middle part
- Ileum: The last part



Large Intestine Parts

- Caecum: 1st part of intestine
- Ileocecal valve: lets waste into large intestine
- Ascending colon
- Transverse colon
- Descending colon
- Rectum
- anus



Reproductive Parts (Female Only)

- Ovary
- Oviduct
- Horns of the Uterus
- Uterus