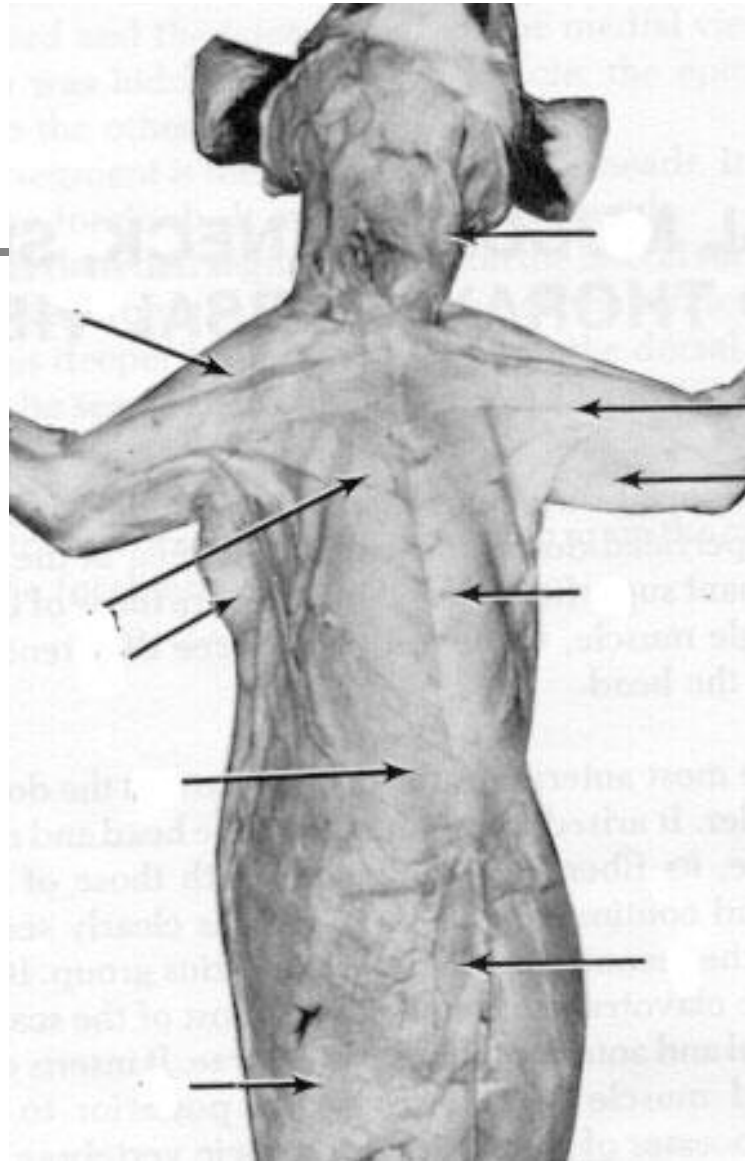
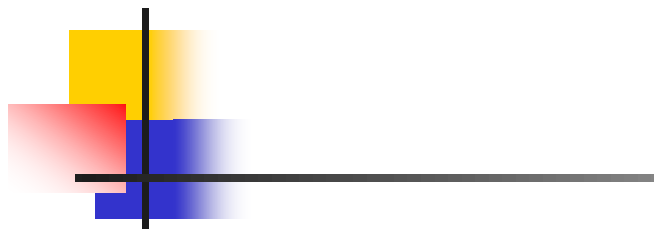
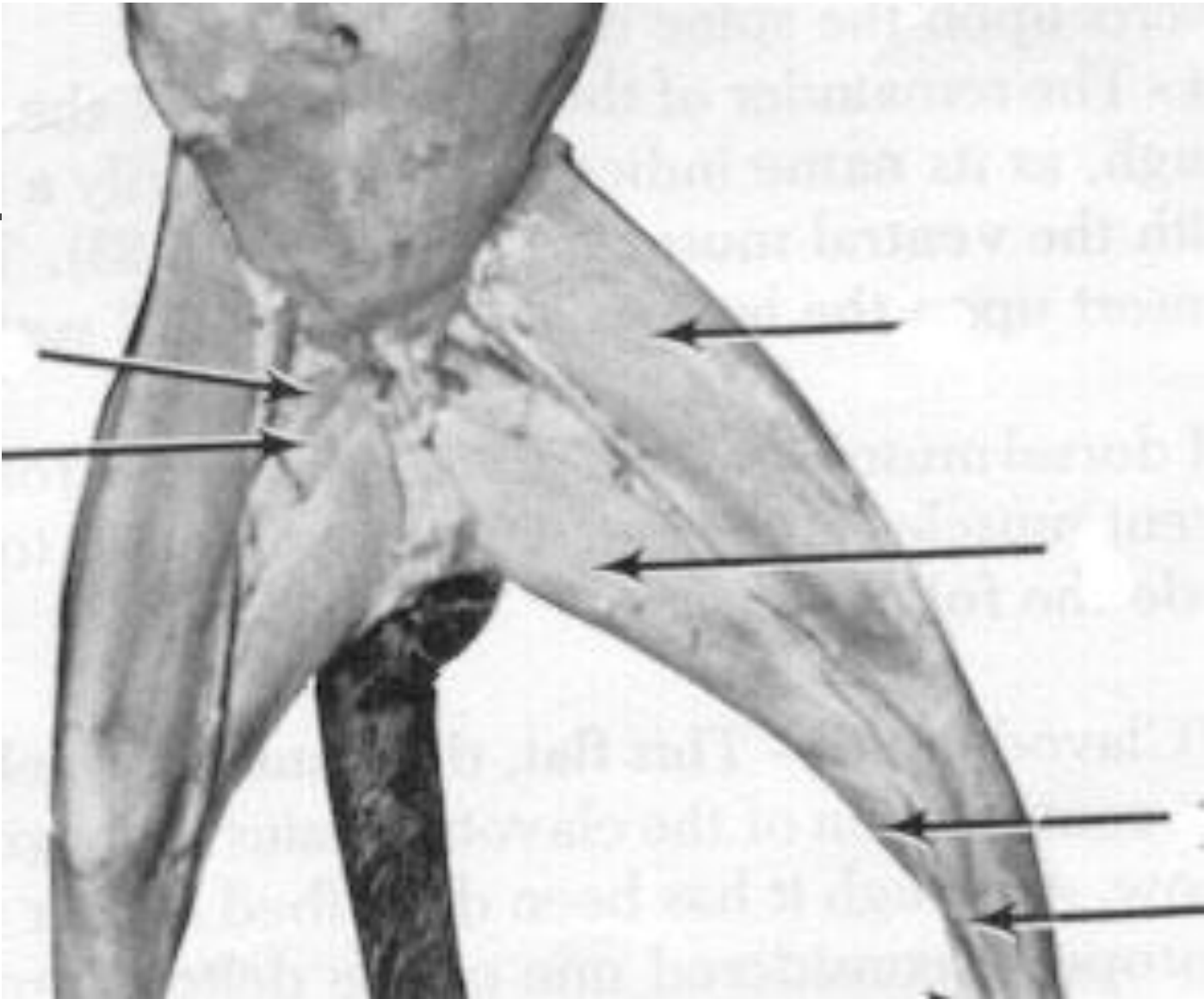


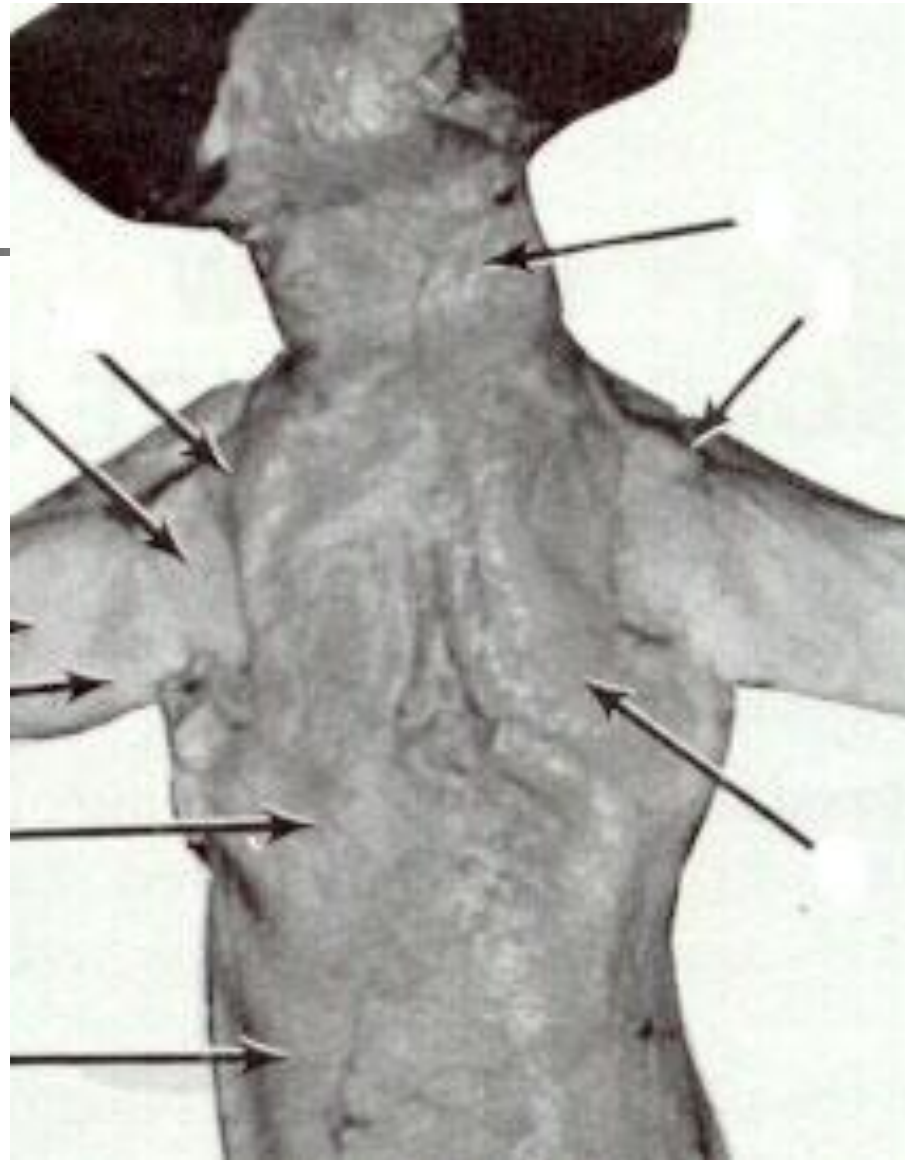
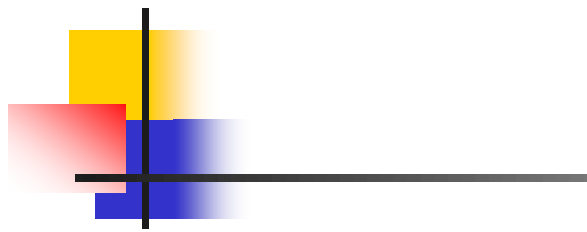


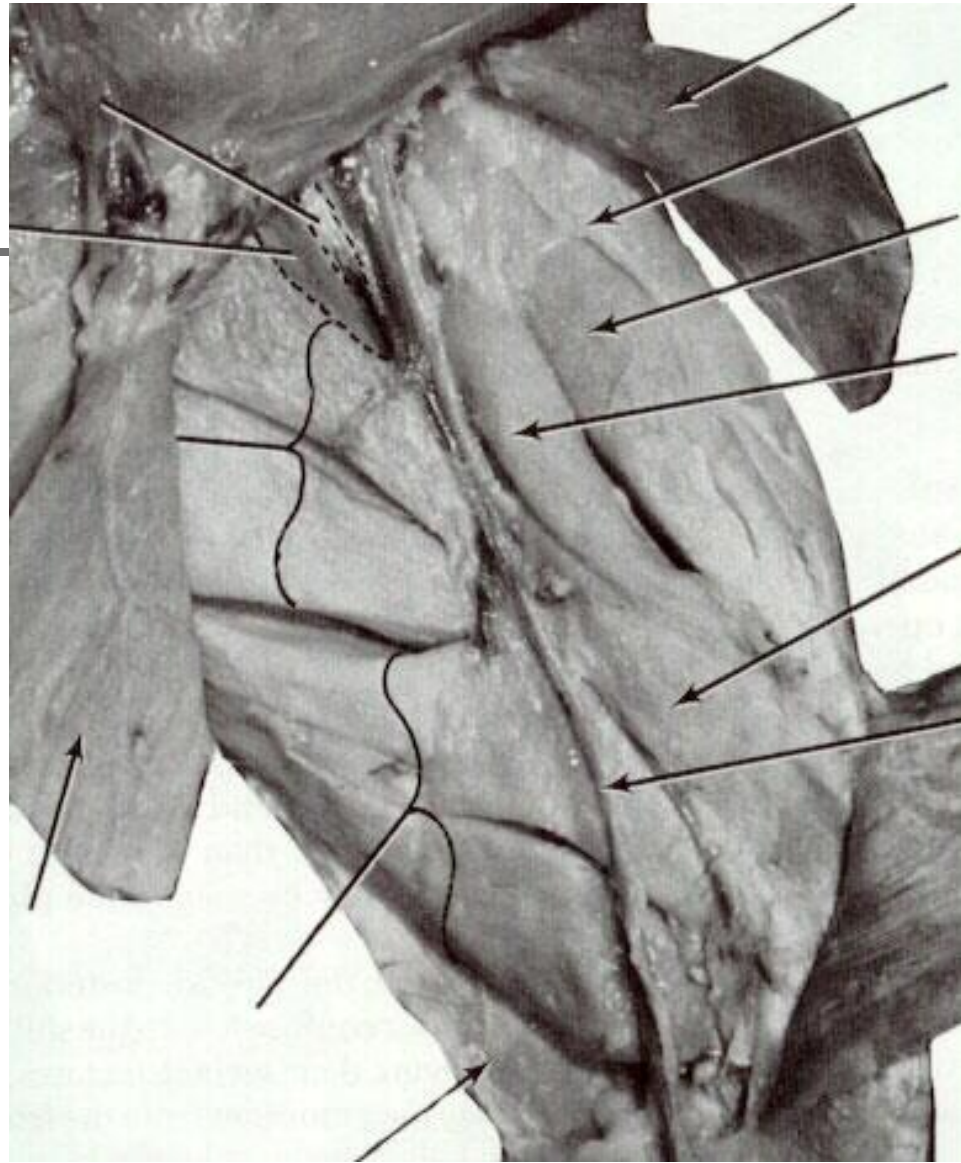
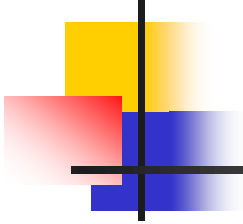
Cat Review

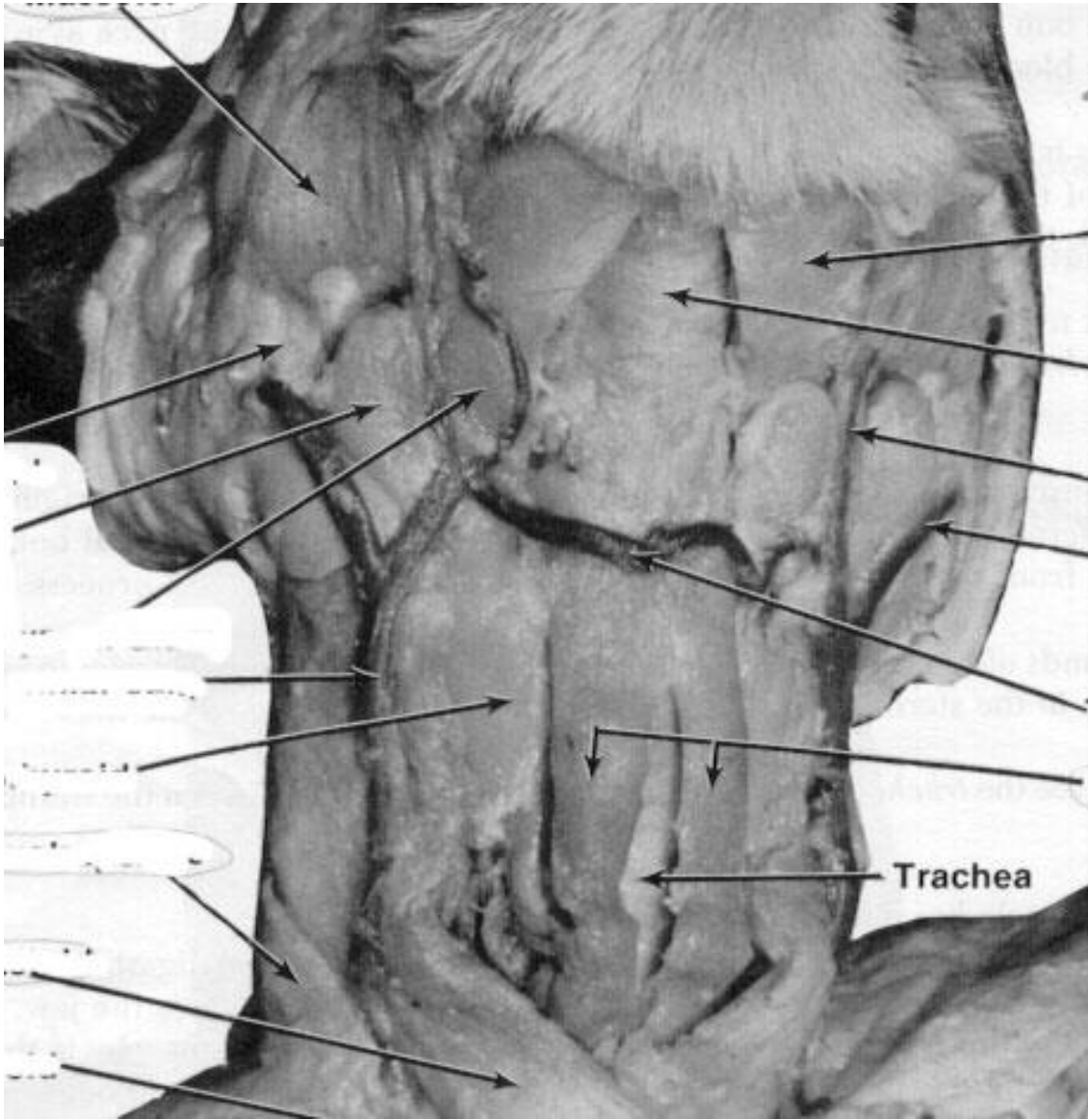
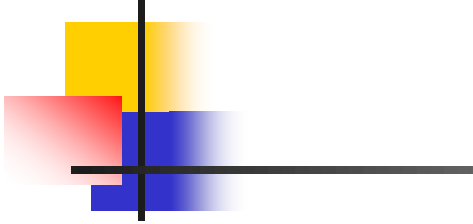
Muscles

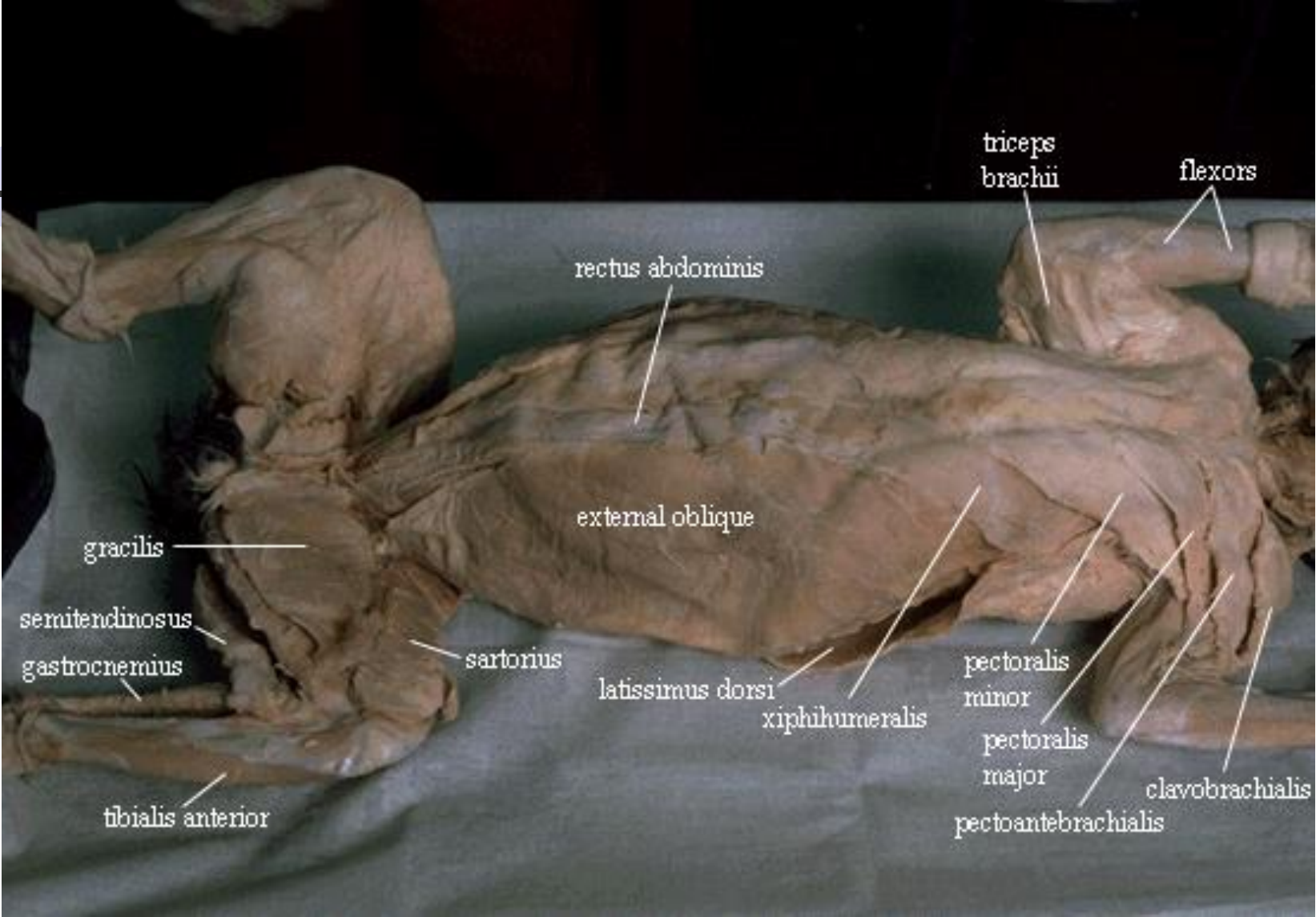












gracilis

semitendinosus

gastrocnemius

tibialis anterior

sartorius

rectus abdominis

external oblique

latissimus dorsi

xiphohumeralis

triceps
brachii

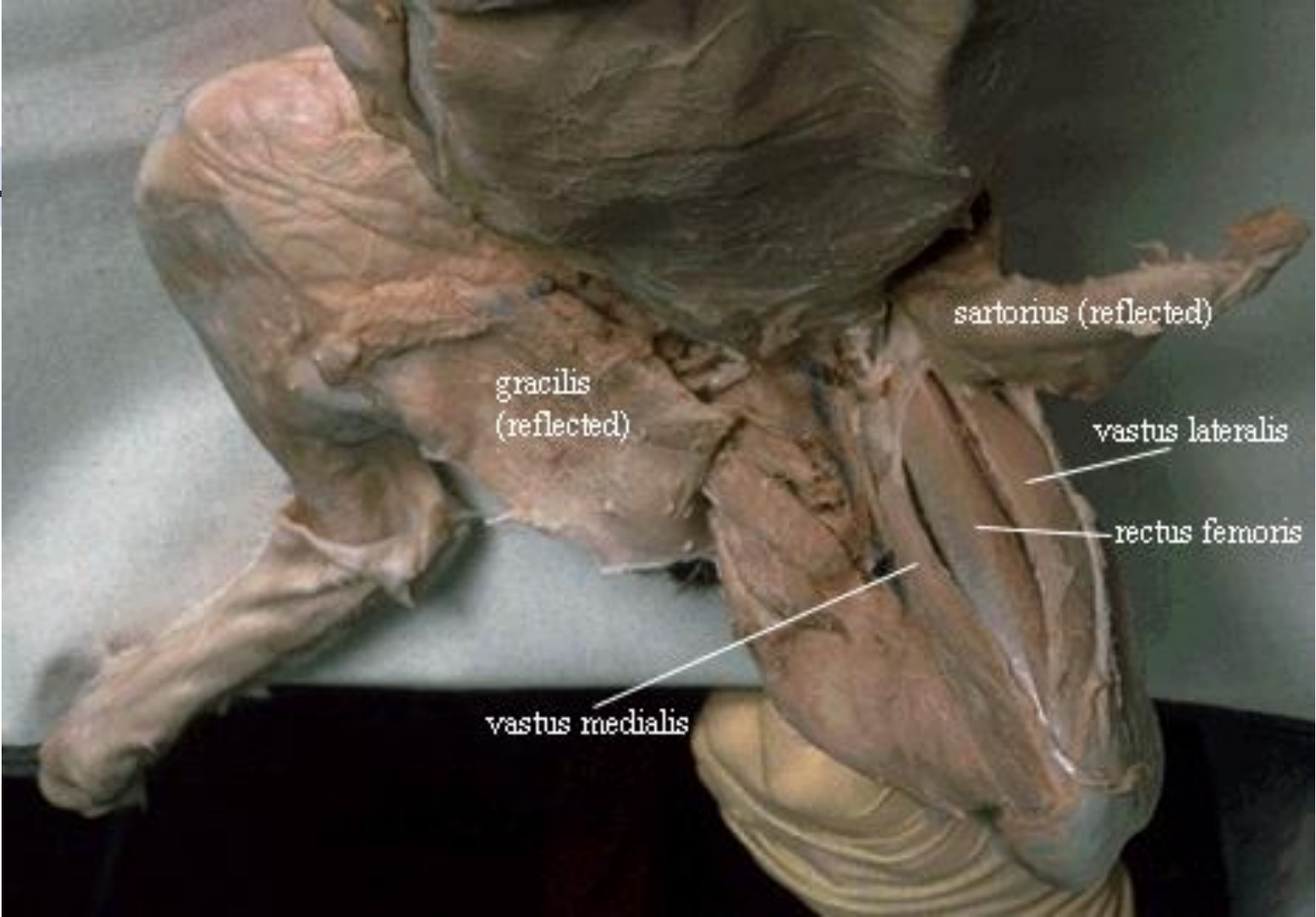
flexors

pectoralis
minor

pectoralis
major

pectoantebrachialis

clavobrachialis



sartorius (reflected)

gracilis
(reflected)

vastus lateralis

rectus femoris

vastus medialis

